

# Local Authority Waters Programme

**LAWPRO**

**&**

**Water European Innovation Partnership (EIP) Project**

**Updates for**

**Kilkenny County Council**

**15 January 2024**



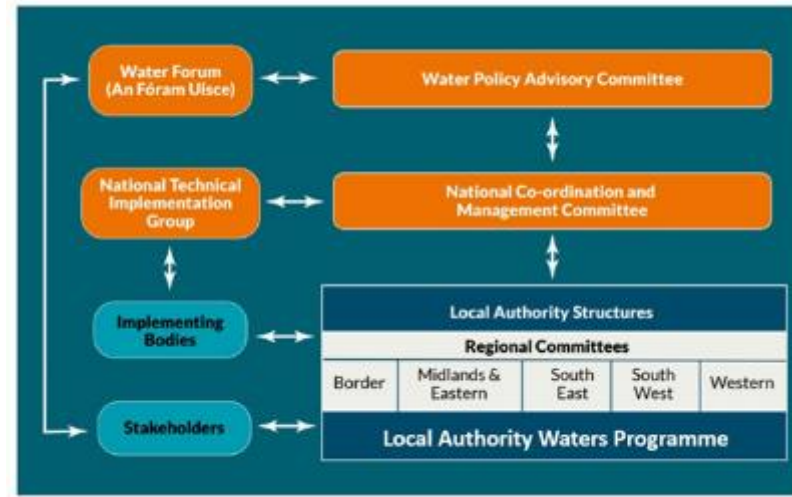
# LAWPRO Update



- LAWPRO
  - National shared service
  - Kilkenny & Tipperary County Councils lead
- Water quality in Kilkenny
- LAWPRO activities



**Co-ordination**

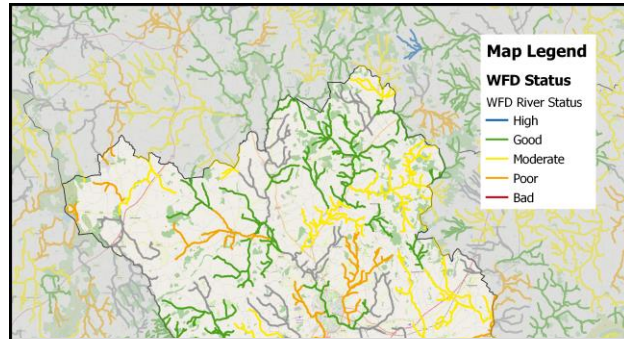


**Community engagement**

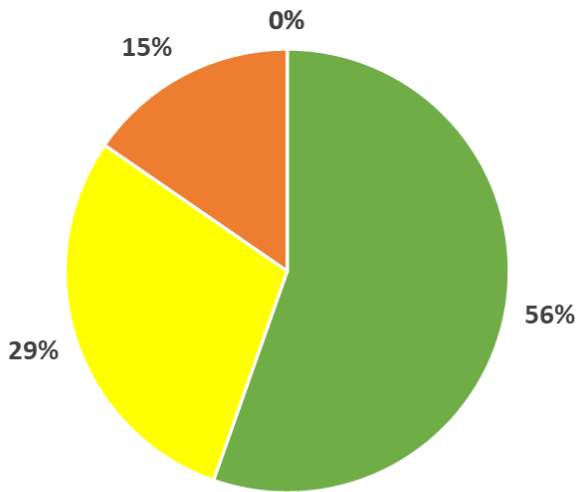


**Catchment Science**

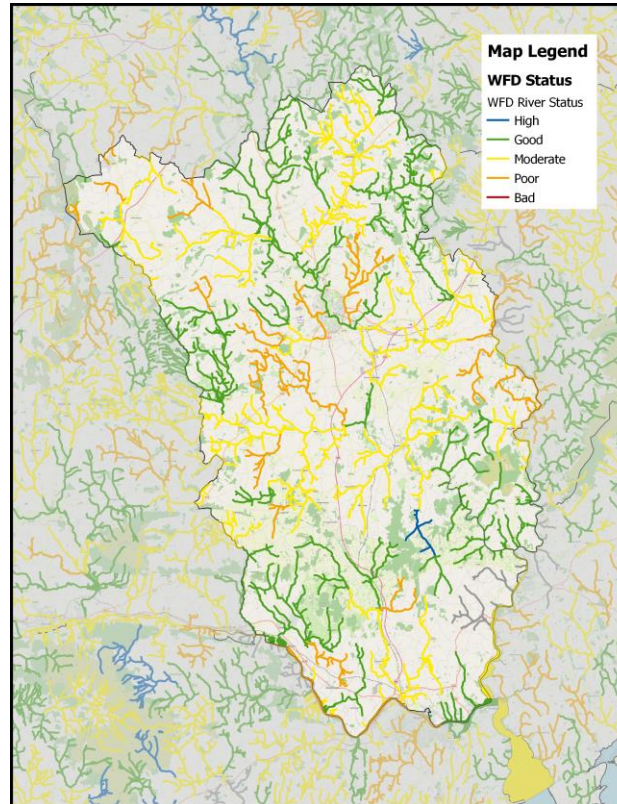
# WFD Status change



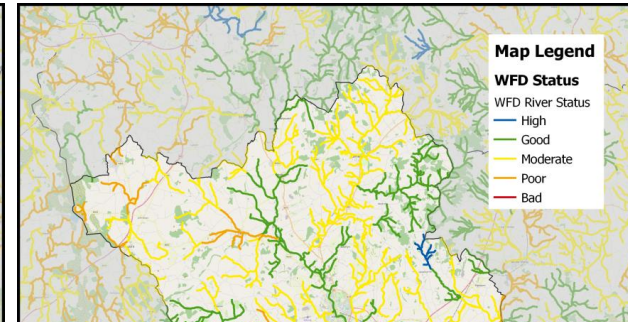
**WFD status surface waters  
 2010-2015**



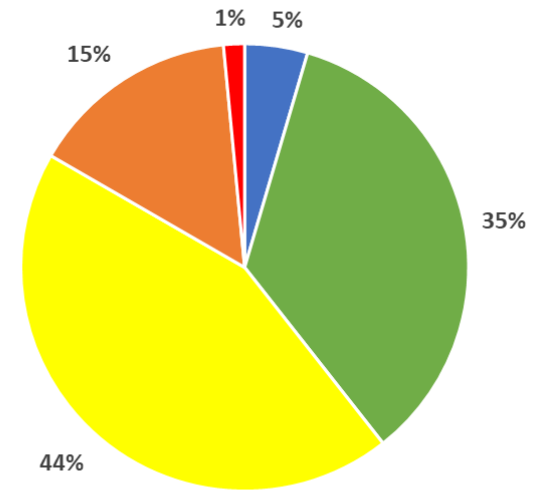
■ High ■ Good ■ Moderate ■ Poor ■ Bad



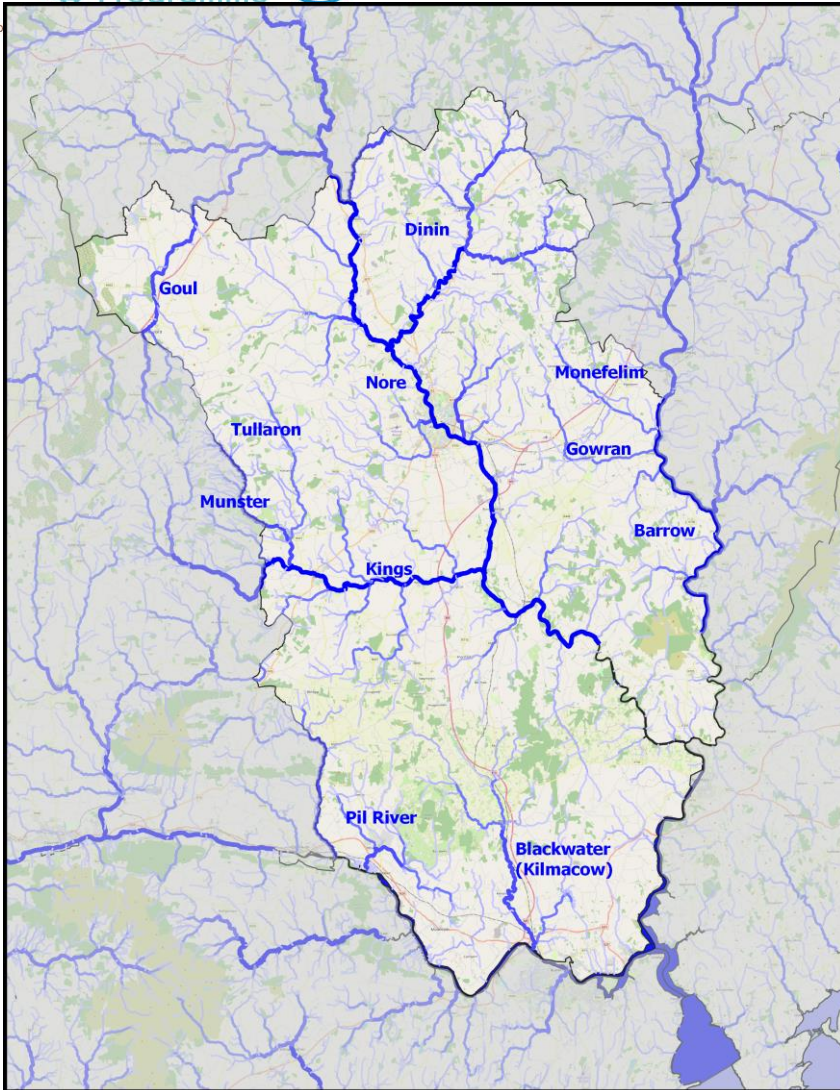
**Co. Kilkenny Rivers:  
 WFD Status 2013-2018**



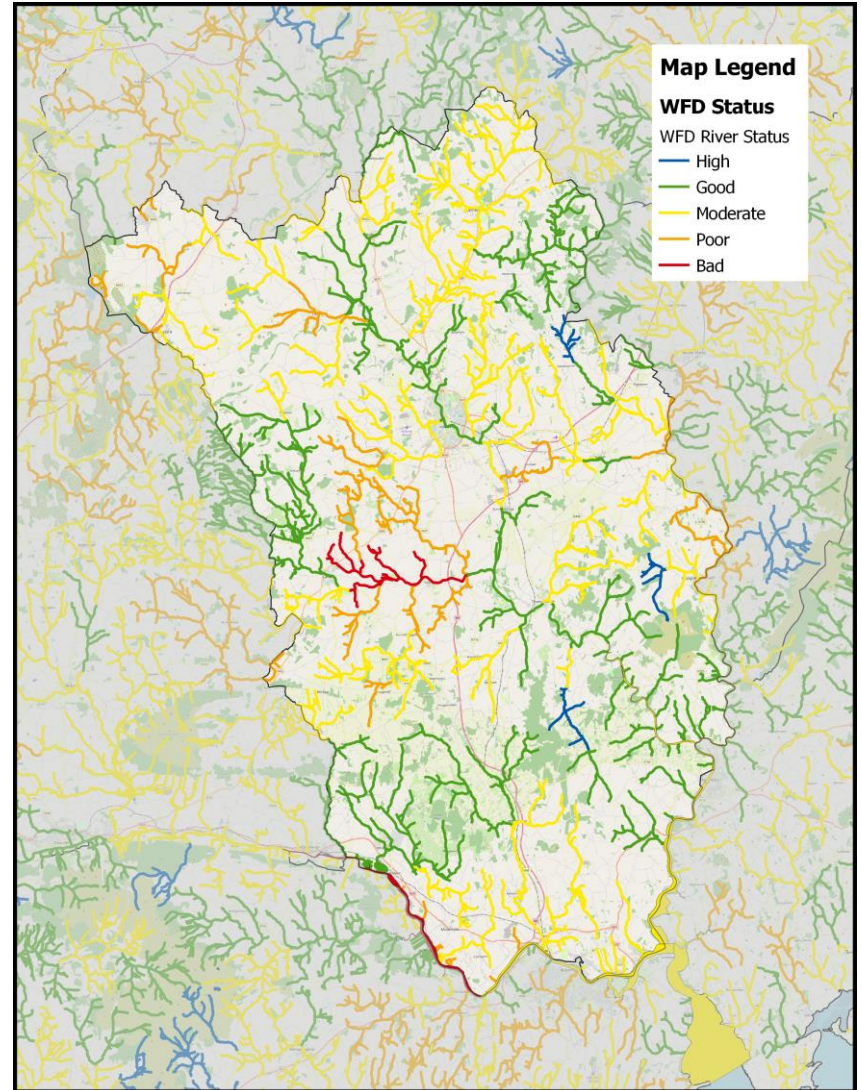
**WFD status surface waters  
 2016-2021**



■ High ■ Good ■ Moderate ■ Poor ■ Bad



County Kilkenny - surface waters map



**Map Legend**

- WFD Status**
- WFD River Status
- High
  - Good
  - Moderate
  - Poor
  - Bad

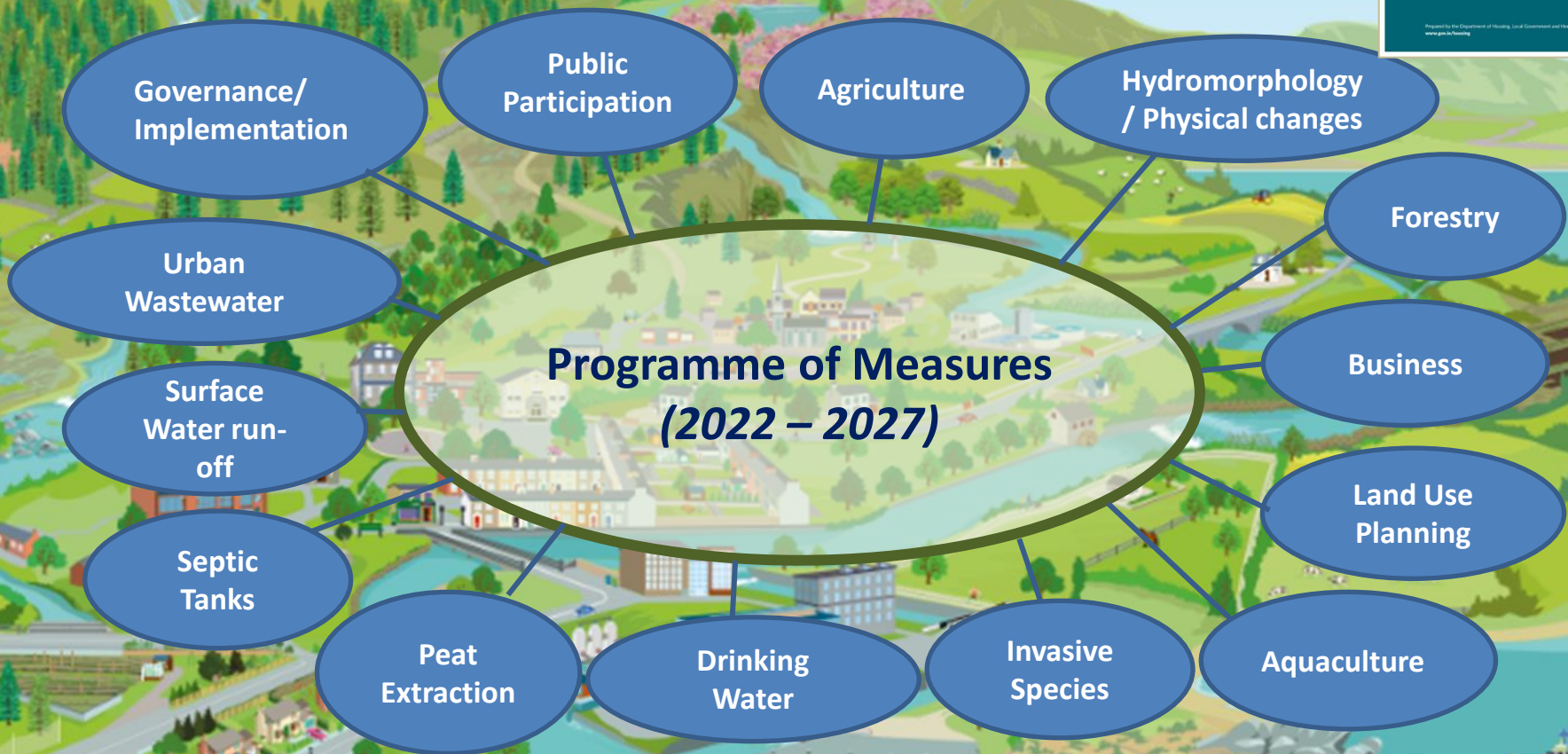
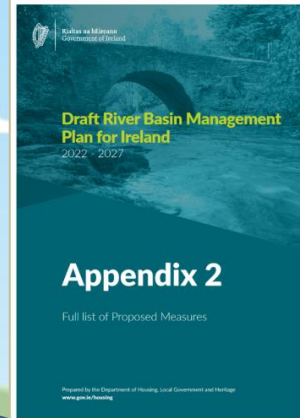
Co. Kilkenny Rivers:  
WFD Status 2016-2021

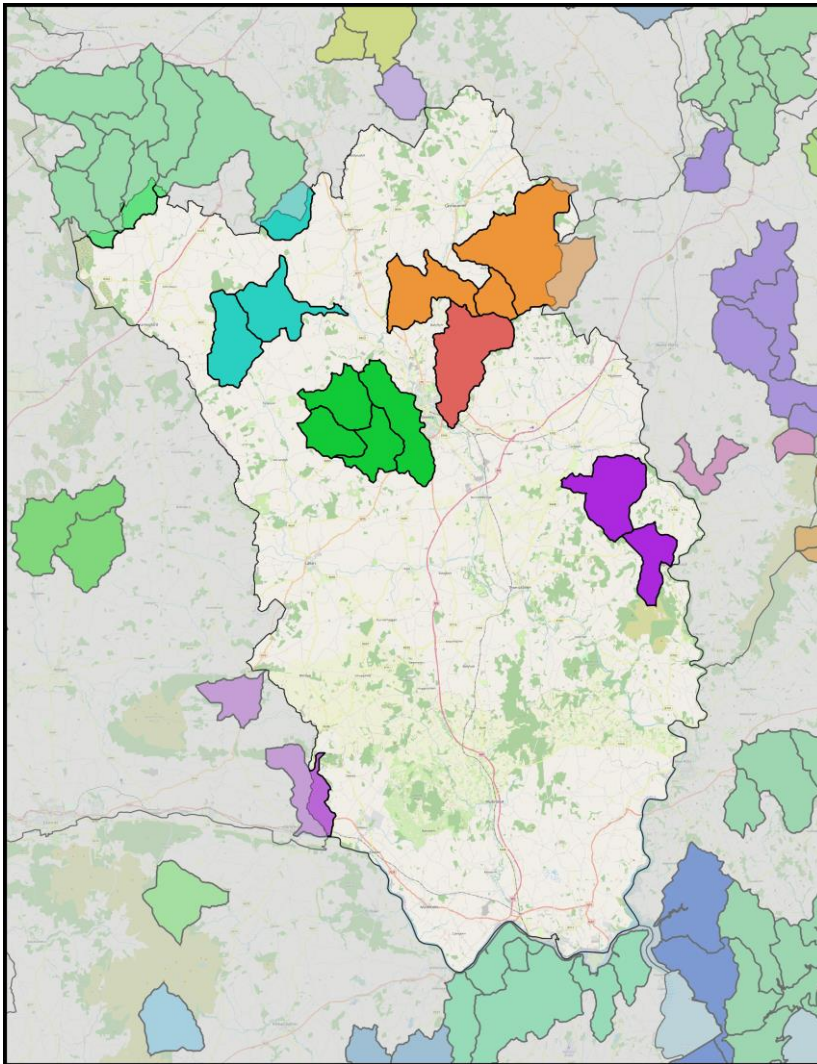
# Actions to Improve Water Quality



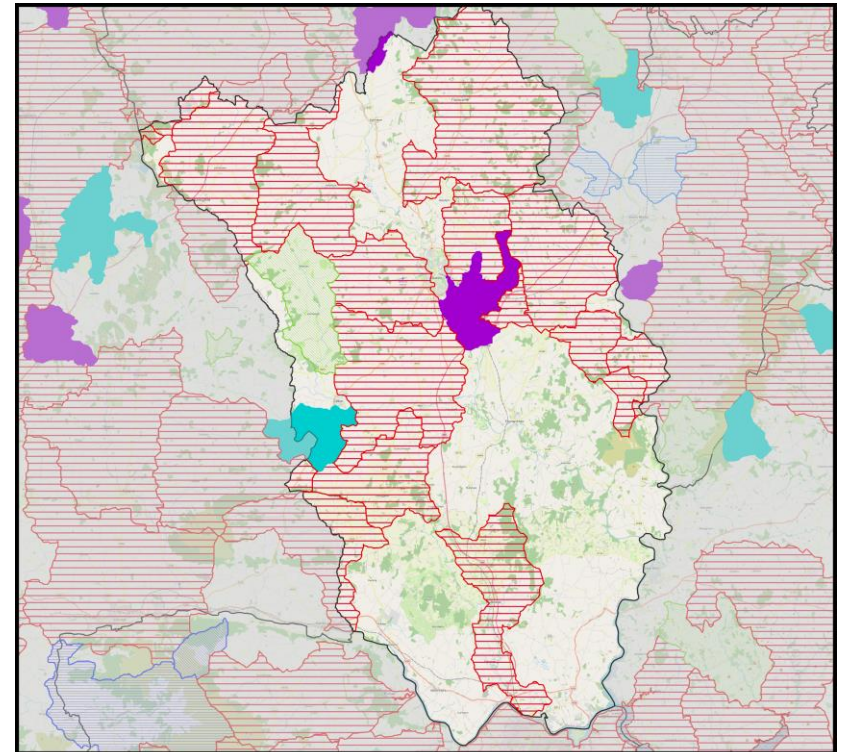
- Increased national ambition to halt the decline in water quality and reverse the damage.
- Integrated Catchment Planning – a specific plan put in place for each of the 46 river catchments in the country.
- Greater coordination and collaboration between State agencies, local authorities, and LAWPRO.
- Delivering multiple benefits for nature, air quality, climate change, and local communities.

# Appendix 2 contains 111 different measures. Here are some key themes:













**2nd Cycle Areas for Action**



**Map Legend**

**Third Cycle Areas for Action: Protection & Restoration**

Restoration

-  Blue Dot Areas for Action LAWPRO and Others
  -  LA Areas for Restoration Local Authorities
  -  Prioritised Areas for Action LAWPRO
  -  Public Health Areas for Restoration NFGWS, IW, HSE, LAs, SFPA
- Protection
-  Blue Dot Areas for Protection LAWPRO and Others
  -  LA Areas for Protection Local Authorities
  -  Public Health Areas for Protection NFGWS, IW, HSE, LAs, SFPA
  -  Prioritised Areas for Protection LAWPRO

**3rd Cycle Areas for Action**



# Water European Innovation Partnership Project Overview



An Roinn Tithíochta,  
Rialtais Áitiúil agus Oidhreacht  
Department of Housing,  
Local Government and Heritage

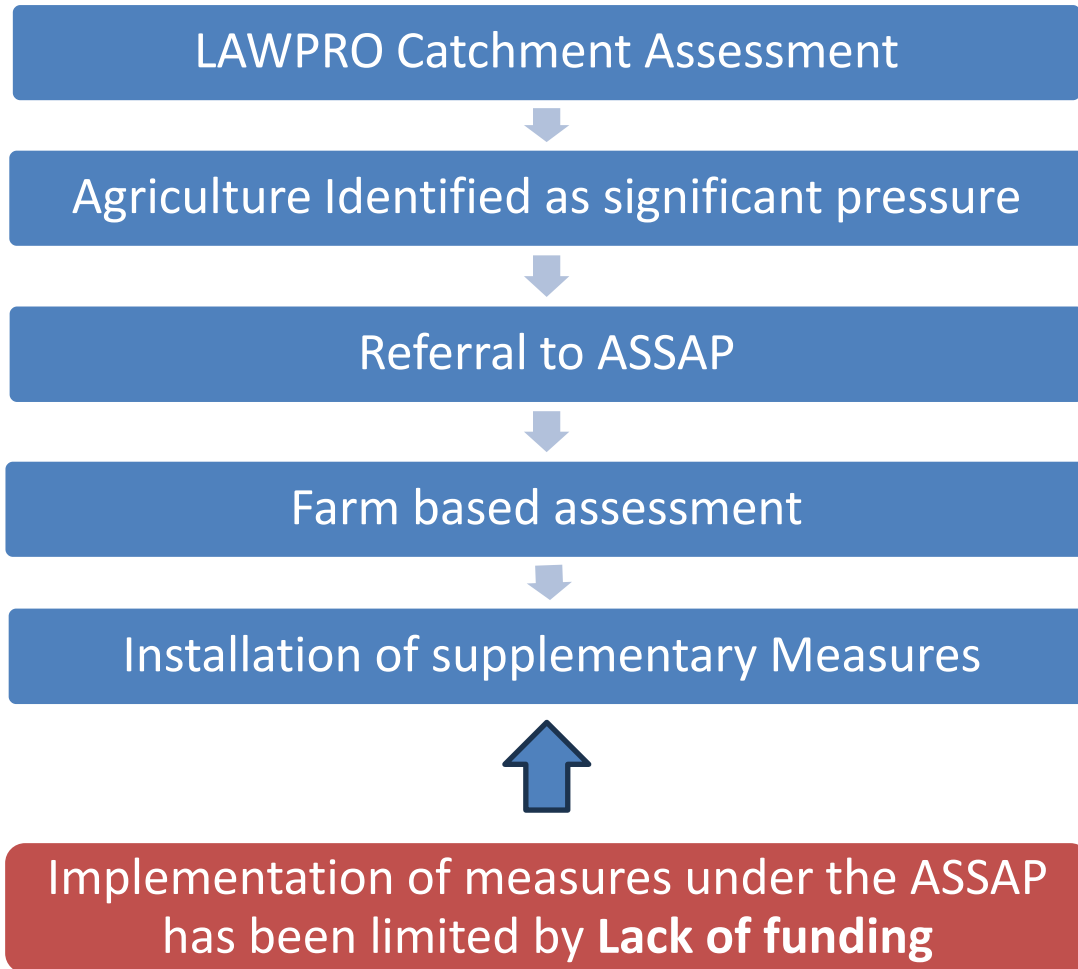


An Roinn Talmhaíochta,  
Bia agus Mara  
Department of Agriculture,  
Food and the Marine



Co-funded by  
the European Union

# Background to the WaterEIP




## Agricultural Sustainability Support and Advisory Service (ASSAP)

- Advisory service provided by Teagasc and Dairy Processing Co-ops
- Funded by DAFM, DHLGH and Dairy Industry Ireland
- Farm specific assessments and plans
- Focuses on voluntary **supplementary** measures over and above compliance with the Good Agricultural Practice (GAP) for the Protection of Water Regulations.

# What is the WaterEIP?

- European Innovation Partnership Scheme funds projects that allow farmers, scientists and other experts to develop and test new ideas and practices
- WaterEIP is an agri-environment payment scheme which will provide €50million in grants to farmers to install water protection measures
- Five-year duration (2023 – 2027)
- Co-funded by the European Union and the Department of Agriculture of Food and the Marine under the Common Agricultural Policy
- Managed by LAWPRO and project partners Teagasc and Dairy Industry Ireland
- €10 million provided for project admin by the Department of Housing, Local Government and Heritage (DHLGH)
- Largest EIP undertaken in the State
- Funds supplementary measures



**WaterEIP**

**WHAT IS WATER EIP?**  
 The development of innovative solutions to address major European & global water challenges.

**€60 MILLION INNOVATIVE ADVISORY LED AGRI-ENVIRONMENTAL PROJECT TO PROTECT WATER**  
 Co-funded by the Government of Ireland and the European Union

**WHAT'S IT ALL ABOUT?**

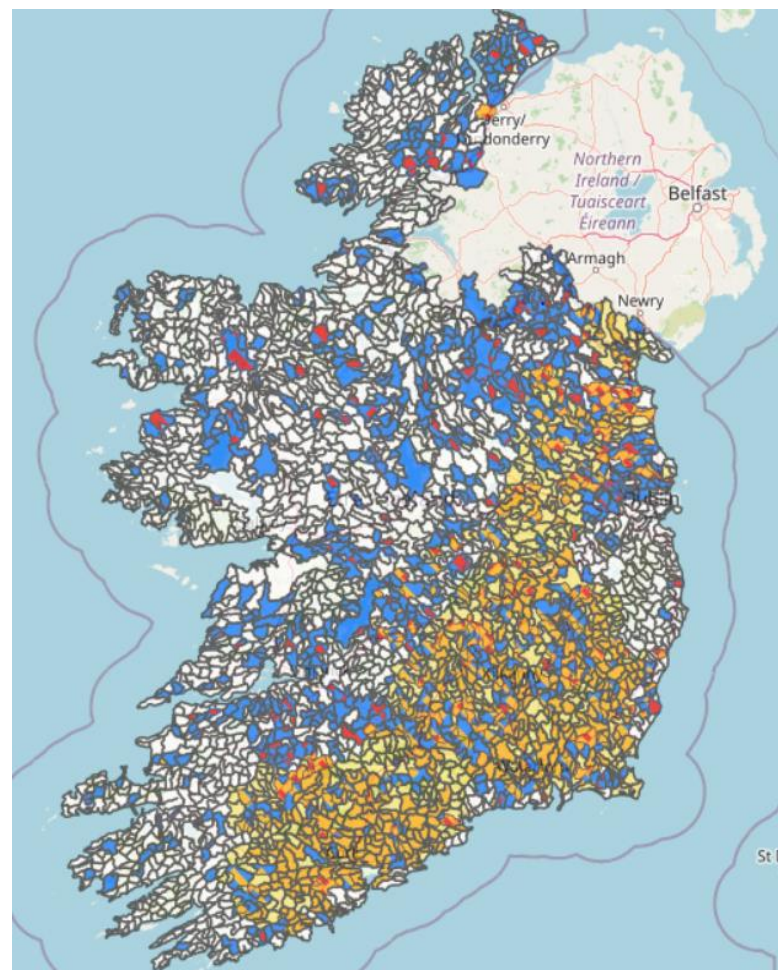
**LARGEST EIP EVER UNDERTAKEN IN THE STATE**

Advisor led, promoting "Water stewardship" with the farmer at the centre of decision making and mapping of measures.  
 Following catchment science principles, local farm knowledge resulting in targeted actions.  
 Focus on water quality but also multiple benefits including climate and biodiversity.

**FOCUS ON THE FUTURE**  
 Aim to target all Agricultural sectors.

## Key Points

- €50 million in grants for the cost of the installation and maintenance of measures for the duration of the scheme
- Focus on water protection with co-benefits including biodiversity, flood mitigation and climate adaptation
- Aims to engage 15,000 farmers in a targeted manner
- Focus is on Priority Areas for Action
- Measures selected will depend on the farm location and type and the significant pressure specific to that area
- Measure selection will be a collaborative process by the ASSAP Advisor and farmer
- Not an income supplementation scheme
- 5 Community Animators will be included in the Project Team from water focused community groups such as Rivers Trusts



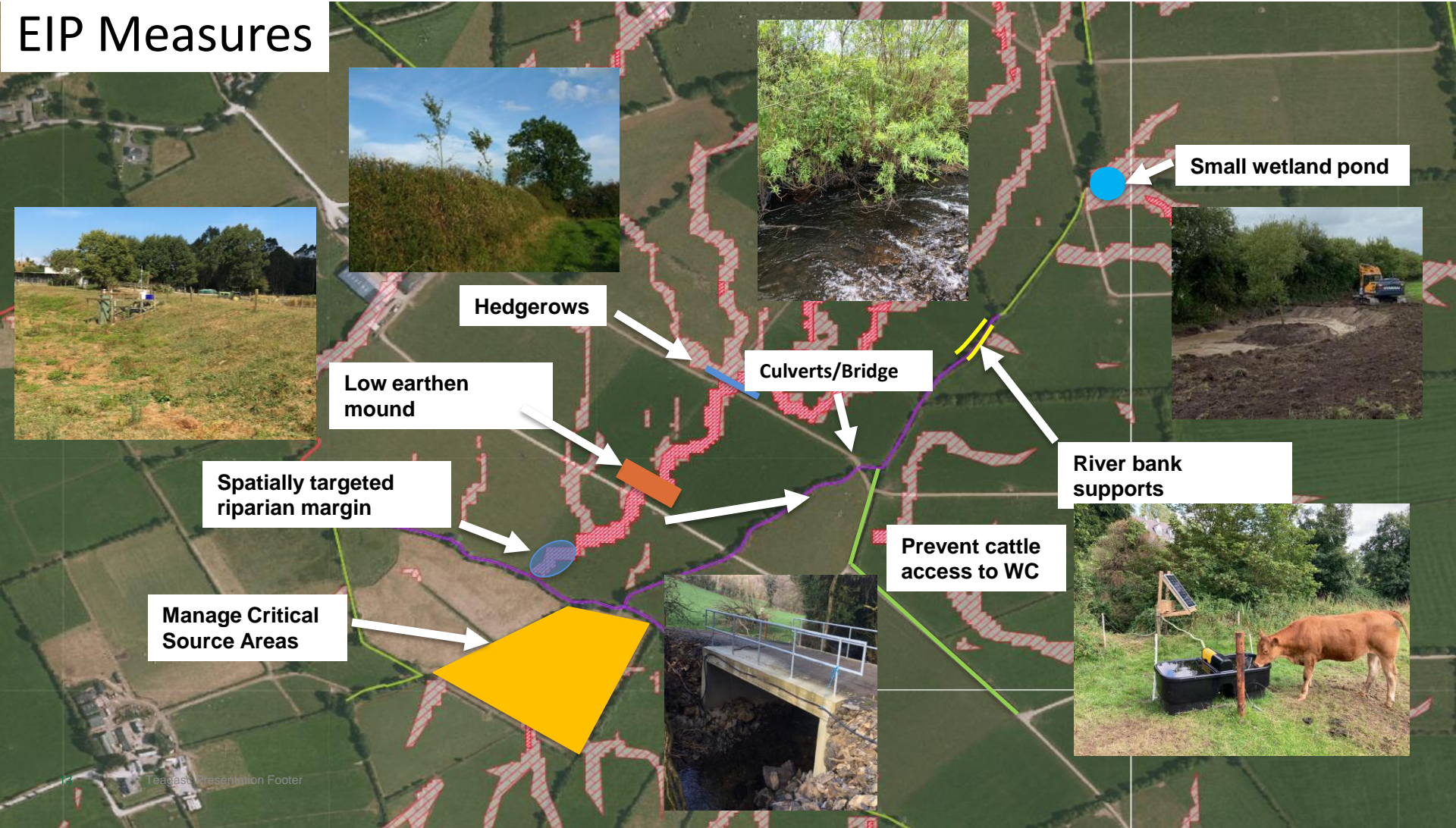
**Source – *Catchments.ie – Targeting Agricultural Pressures***

Orange – Nitrate Losses

Navy – Phosphorous/Sediment losses

White – Agriculture is not currently a pressure

# EIP Measures



# Entry to the Scheme

Access will be prioritised using a tiered system and farmers will be approached to make applications by ASSAP/the Project Team.

RESTORE

**Tier 1** - Farms in cycle 2 or cycle 3 PAAs assessed by ASSAP

RESTORE

**Tier 2** - Farms in cycle 3 PAA or within a catchment with a community led water quality initiative identified as having a nutrient/sediment/pesticide issue, prioritised by the EPA/LA

PROTECT

**Tier 3** - Farms in cycle 3 PAA or within a catchment with a community led water quality initiative, in catchments not identified as having a nutrient/sediment/pesticide issue, not prioritised by the EPA

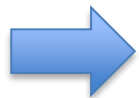
OTHER

**Tier 4** – All other farms not included above



## Summary

- €50 million in grants to install water protection measures on farms
- Entry through ASSAP Advisors – not an open call
- Voluntary – no obligation to enter
- Runs until 2027
- Engaging up to 15,000 farmers



**Targeted Scheme - The Right Measure in the Right Place**

## Community Engagement

A core aim of LAWPRO is to engage communities in caring for local water bodies through active participation and stewardship of local streams, rivers, lakes, and coastal areas.





## Communities Team (South East)



- Senior Community Water Officer (New role)
- 3 Community Water Officers (2 new appointments)
- Working collaboratively w/ communities, scientists & agencies

## Community Supports (Kilkenny)

- **CWDF** - Community Water Development Fund
- National Heritage Week
- National Water Heritage Day
- Water Heritage Award
- World Water Day
- **Acorn Project**
- **Keep Kilkenny Beautiful**
- **Castlecomer Tidy Towns**
- **Barrow Valley Community Development (The Hub)**
- **Nore River Catchment Trust**





**Thank You**  
**Questions?**