



Kilkenny County Council

Comhairle Chontae Chill Chainnigh

Kilkenny County Council

Bridge Street and Flaggy Lane Active Travel Scheme, Callan



KILGALLEN & PARTNERS

CONSULTING ENGINEERS



JUNCTION OF BRIDGE STREET, MILL STREET & GREEN STREET



- **Irregular geometry;**
- **Large turning radii leading to high turning speeds;**
- **Limited facilities for vulnerable road users.**

BRIDGE STREET



- **One-way street (northbound) for vehicular traffic with narrow footways and continuous building line on both sides;**
- **Width between buildings is typically between 6.0m and 7.0m but reduces to 5.3m close to its junction with Mill Street;**
- **No facilities for cyclists and sub-standard facilities for pedestrians;**
- **Bridge Street provides the primary link across the river to the schools north of King's River.**

FLAGGY LANE

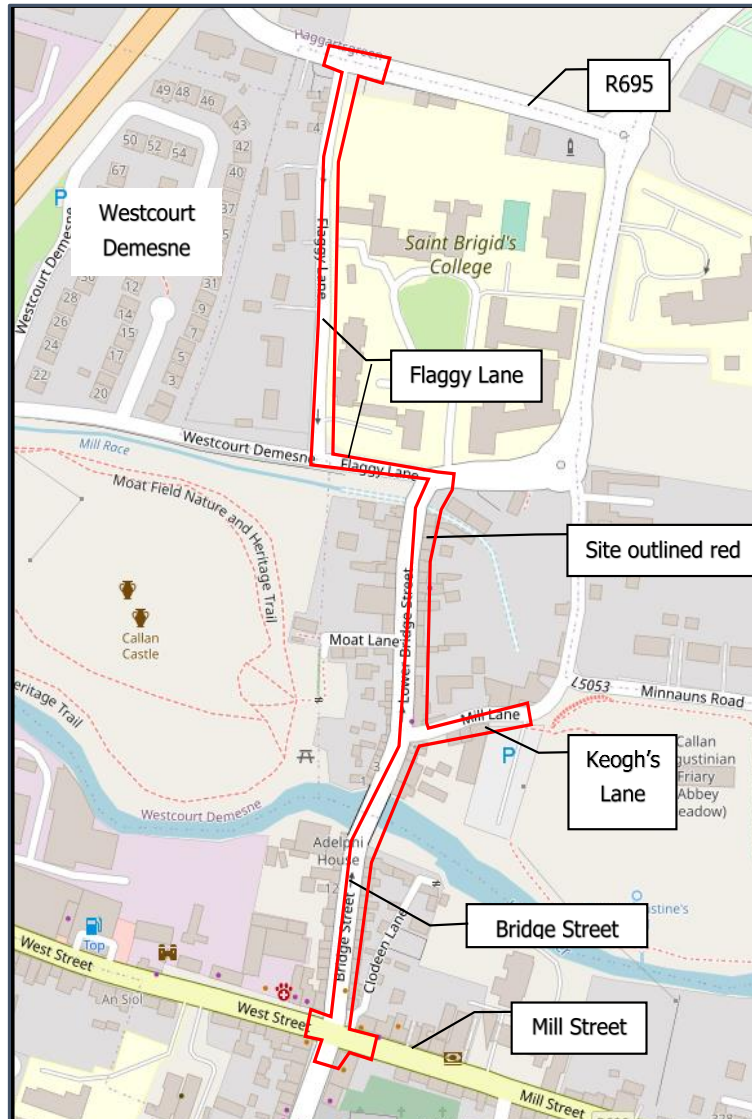


- **Large turning radii at junction of Bridge Street and Flaggy Lane and at junction of R695 and Flaggy Lane;**
- **Limited facilities for pedestrians and none for cyclists;**
- **Unsafe parking;**

OBJECTIVES OF PROPOSED DEVELOPMENT

- **Provide appropriate facilities for pedestrians and cyclists across King's River, thus linking the significant residential areas south of King's River with the schools north of the river;**
- **Maintain the existing one-way system for vehicles on Bridge Street;**
- **Improve traffic circulation between Keogh's Lane, Bridge Street and Flaggy Lane;**
- **Provide facilities for pedestrians and cyclists on Flaggy Lane;**
- **Reduce the widths of junctions to comply with DMURS and provide appropriate crossing facilities for vulnerable road users;**
- **Maintain access for the numerous properties on Bridge Street;**
- **Enhance the streetscape on Bridge Street through improved lighting, undergrounding of services where possible, landscaping and street furniture.**

PROPOSED DEVELOPMENT

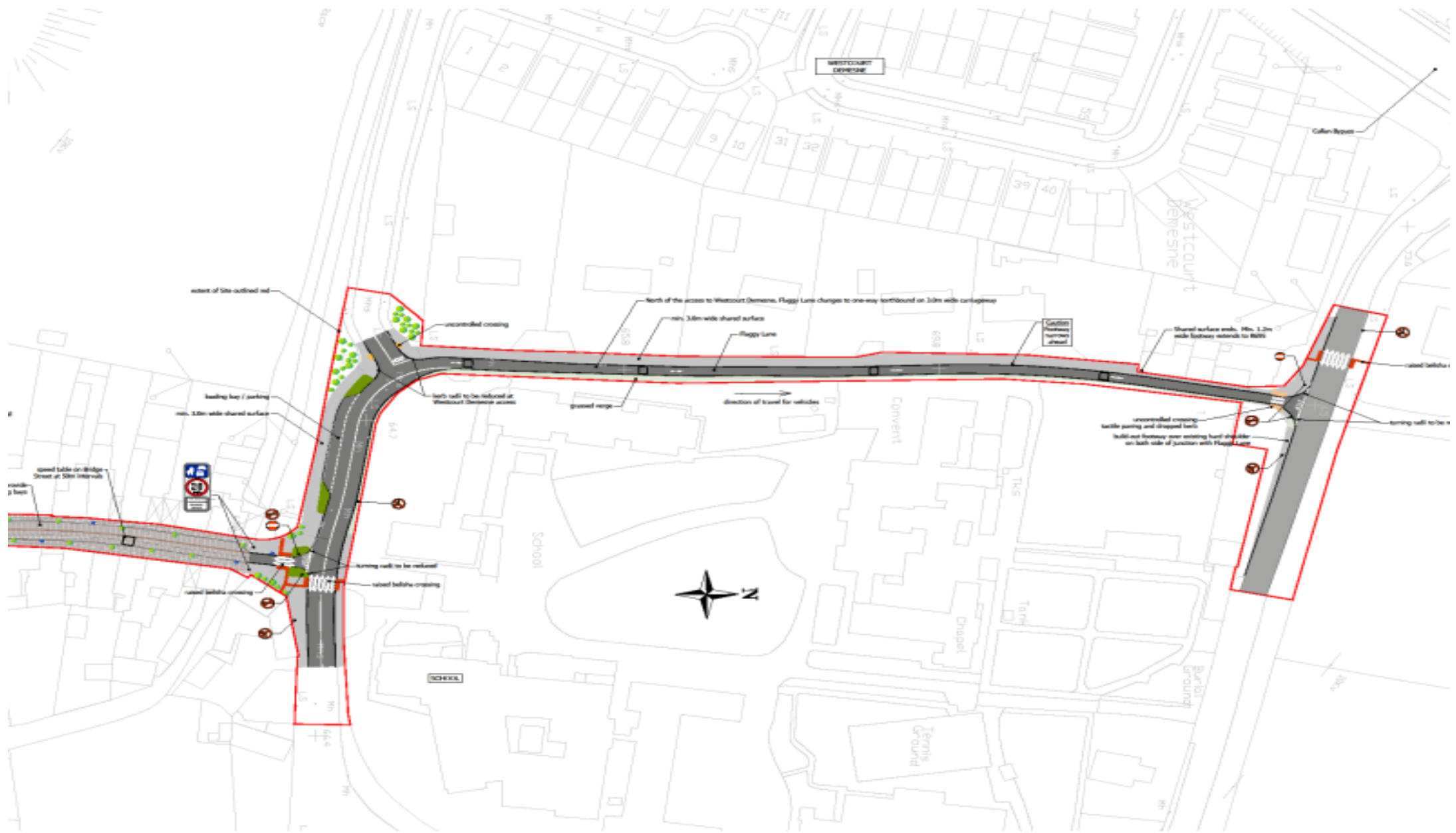


- **Improve junction of Bridge Street, Mill Street**
- Ramped zebra crossings;
- Tighter junction radii
- **Bridge Street**
- To convert the entire width of Bridge Street into a surface shared for all road users;
- Road surface, street furniture and landscaping to be consistent with shared use;
- 20kph speed limit to be imposed on Bridge Street;
- Speed cushions at regular intervals;
- Signage to reflect status of street.
- **Keogh's Lane**
- Direction of one-way vehicle flows on Keogh's Lane to be reversed;
- Keogh's Lane between Bridge Street and the KCAT carpark to become a shared surface, similar to that on Bridge Street.
- **Flaggy Lane**
- Direction of one-way vehicle flow north of the access to Westcourt Demesne to be reversed;
- Carriageway width will be reduced to 3.0m;
- 3.0m wide shared surface for pedestrians and cyclists to be provided between Bridge Street and the R695 (curtailed 35m short of the R695)
- Ramped zebra crossings and tighter junction radii at Bridge Street Junction;
- **Miscellaneous**
- Surface water drainage system to be upgraded;
- Public lighting to be upgraded;
- Overhead utilities to be undergrounded where feasible.



INSET - VISUALISATION FOR SHARED SURFACE ON BRIDGE STREET





extent of site outlined in red

loading bay / parking

min. 3.0m wide shared surface

speed table on bridge Street at 50m intervals

roadside sign

uncontrolled crossing

uncontrolled crossing

half width to be reduced at Westcourt Demesne access

turning width to be reduced

width before crossing

North of the access to Westcourt Demesne, Rugby Lane changes to one-way northbound on 20m wide carriageway

min. 3.0m wide shared surface

Rugby Lane

grass verge

direction of travel for vehicles

shared surface ends, Min. 1.2m wide footway extends to RHS

uncontrolled crossing

kerb parking and dropped kerb

build out footway over existing kerb shoulder on both side of junction with Pleasant Lane

turning width to be reduced

WESTCOURT EXTENSION

WESTCOURT DEMESNE

SCHOOL



Convent

School

Chapel

Tennis Ground

Purton Ground

Westcourt Demesne

Colin Ryan