

Affordable Homes

3 Bedroom Semi- Detached

6 units available

These Modern and bright 3 bedroomed semi detached homes with a gross floor area of 103sqm offers an open plan layout throughout. The spacious kitchen and dining spaces can comfortably accommodate large gatherings or busy families, and the interior space is maximized to ensure pleasant and spacious living. Dual aspect with sliding patio doors to the rear garden ensures that the house is flooded with natural light throughout. The master bedroom on the first floor has its own ensuite. This floor is complete with two more spacious bedrooms and is finished with a large family bathroom.



🏠 Semi-detached

🛏 3 bed

🚿 3 bathrooms

📏 Gross floor area of 103 sq m

🏠 Brick & Render finish

3 Bedroom Terraced

3 units available

These Modern and bright 3 bedroomed terraced homes with a gross floor area of 100sqm offers an open plan layout throughout. The spacious kitchen and dining spaces can comfortably accommodate large gatherings or busy families, and the interior space is maximized to ensure pleasant and spacious living. Dual aspect with sliding patio doors to the rear garden ensures that the house is flooded with natural light throughout. The master bedroom on the first floor has its own ensuite. This floor is complete with two more spacious bedrooms and is finished with a large family bathroom.



🏠 Terraced

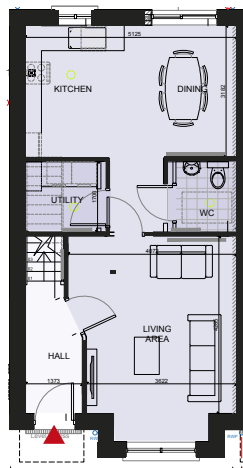
🛏 3 bed

🚿 3 bathrooms

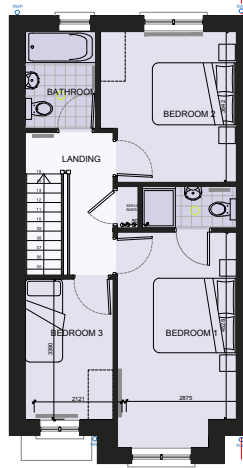
📏 Gross floor area of 100 sq m

🏠 Brick & Render finish

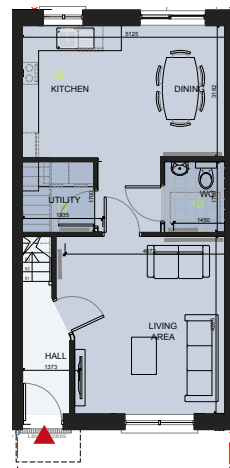
Ground Floor



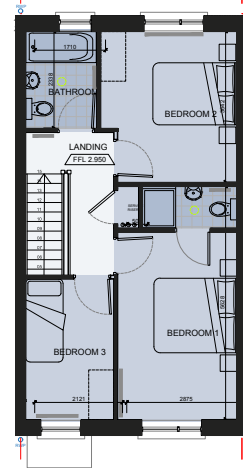
First Floor



Ground Floor



First Floor



4 Bedroom Semi-Detached

2 units available

These Modern and bright 4 bedroomed semi detached homes with a gross floor area of 123m sq m offers an open plan kitchen, dining and snug room layout. Separate Living Room is provided to the front. The spacious kitchen and dining spaces can comfortably accommodate large gatherings or busy families, and the interior space is maximized to ensure pleasant and spacious living. Dual aspect with sliding patio doors to the rear garden ensures that the house is flooded with natural light throughout. The master bedroom on the first floor has its own ensuite. This floor is complete with three more spacious bedrooms and is finished with a large family bathroom.



🏠 Semi-detached

🛏 4 bed

🚿 3 bathrooms

📏 Gross floor area of 123 sq m

🏠 Brick & Render finish

4 Bedroom Detached

1 units available

These Modern and bright 4 bedroomed detached homes with a gross floor area of 123sqm offers an open plan kitchen, dining and snug room layout. Separate Living Room is provided to the front. The spacious kitchen and dining spaces can comfortably accommodate large gatherings or busy families, and the interior space is maximized to ensure pleasant and spacious living. Dual aspect with sliding patio doors to the rear garden ensures that the house is flooded with natural light throughout. The master bedroom on the first floor has its own ensuite. This floor is complete with three more spacious bedrooms and is finished with a large family bathroom.



🏠 Detached

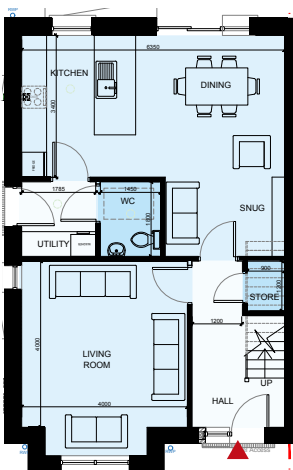
🛏 4 bed

🚿 3 bathrooms

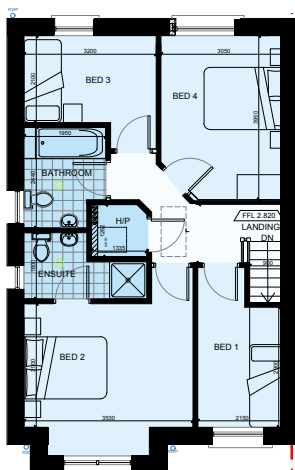
📏 Gross floor area of 123 sq m

🏠 Brick & Render finish

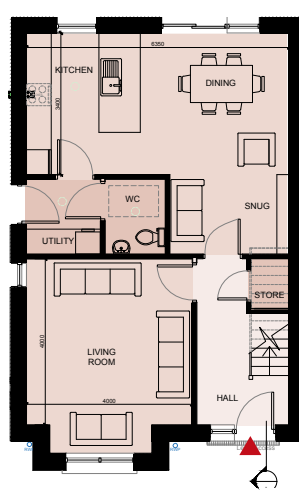
Ground Floor



First Floor



Ground Floor



First Floor

